

ATSDR Public Health Activities and Public Health Assessment Process

Sue Casteel

Environmental Health Scientist

Environmental Justice and Climate Protection Conference

June 16, 2023

Agency for Toxic Substances and Disease Registry



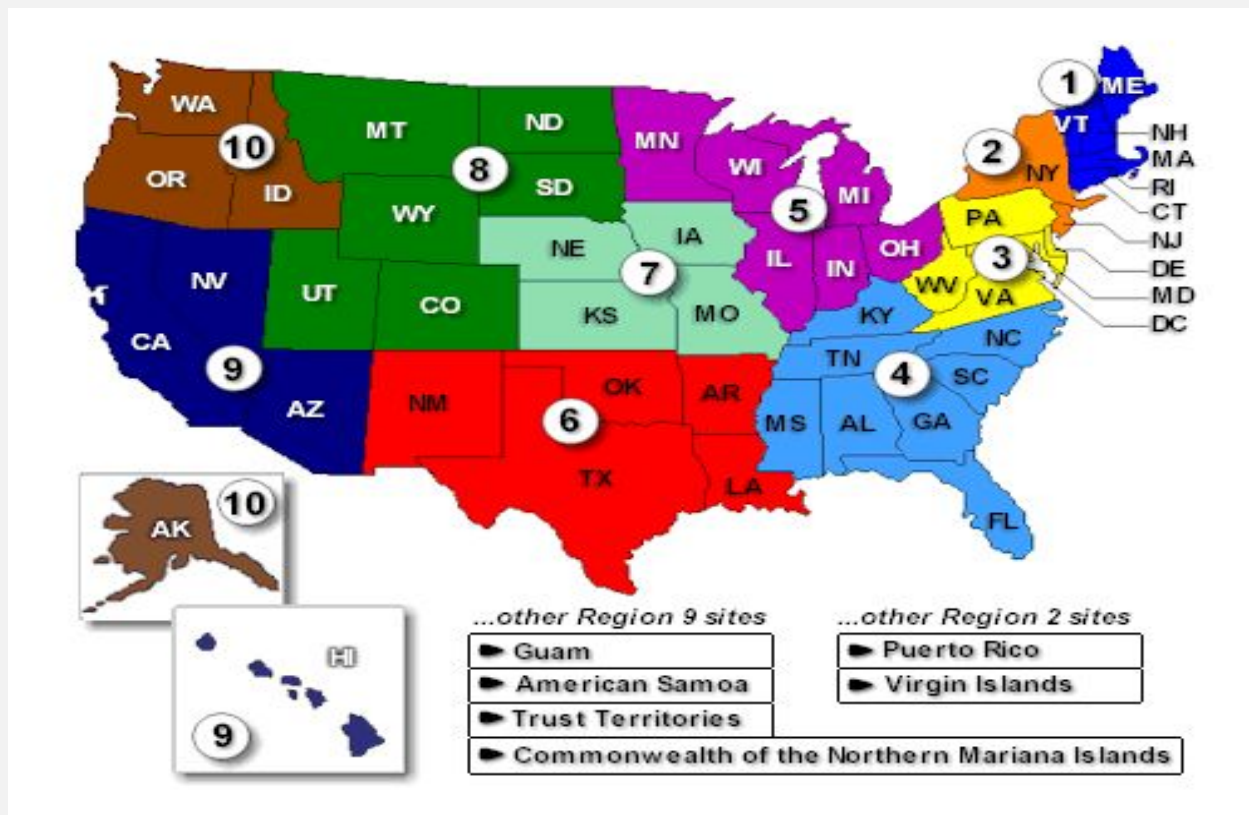
Agency for Toxic Substances and Disease Registry

- **Federal public health agency**
- **Congressionally mandated to**
 - Perform public health assessments at contaminated sites
 - Develop toxicological profiles on harmful substances
 - Conduct epidemiological studies
 - Maintain health registries and conduct medical surveillance
- **Regional offices provide national presence**

ATSDR Regional Offices

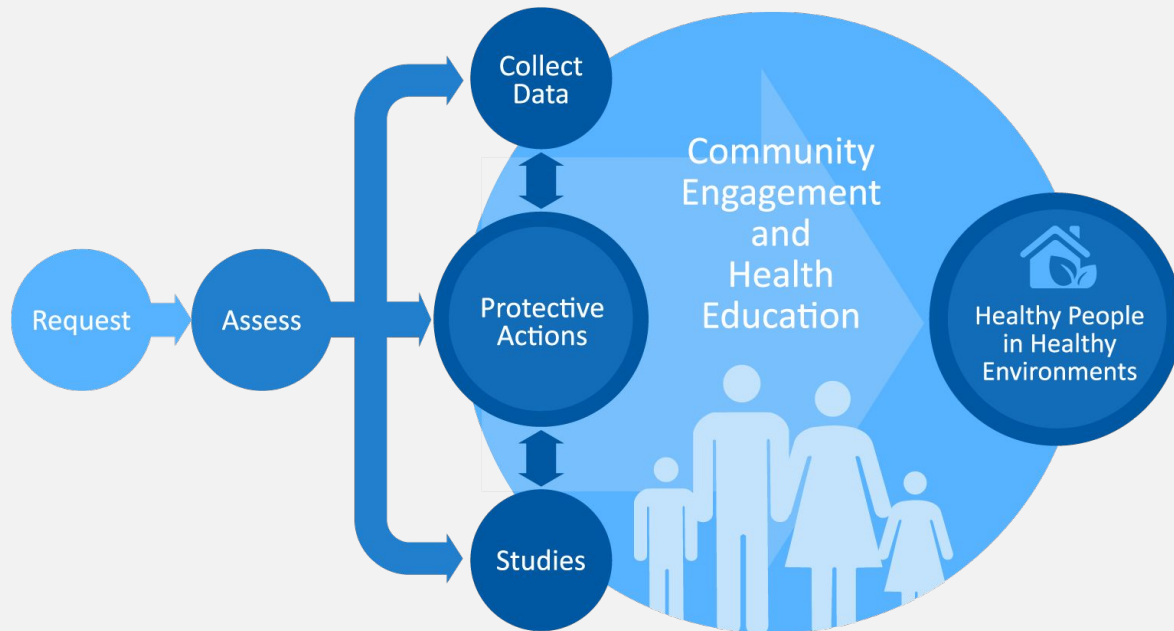
- Located in each of EPA's 10 regional offices
- Provide unique technical expertise and field experience
- Serve as liaisons with ATSDR HQs and other federal agencies and help implement regional programs
- Develop working relationships with EPA, other federal and state agencies, community groups, and citizens
- Provide a national presence

ATSDR Regional Offices



Protecting Communities

We receive requests for support from federal, state, and local agencies; community groups; and residents.



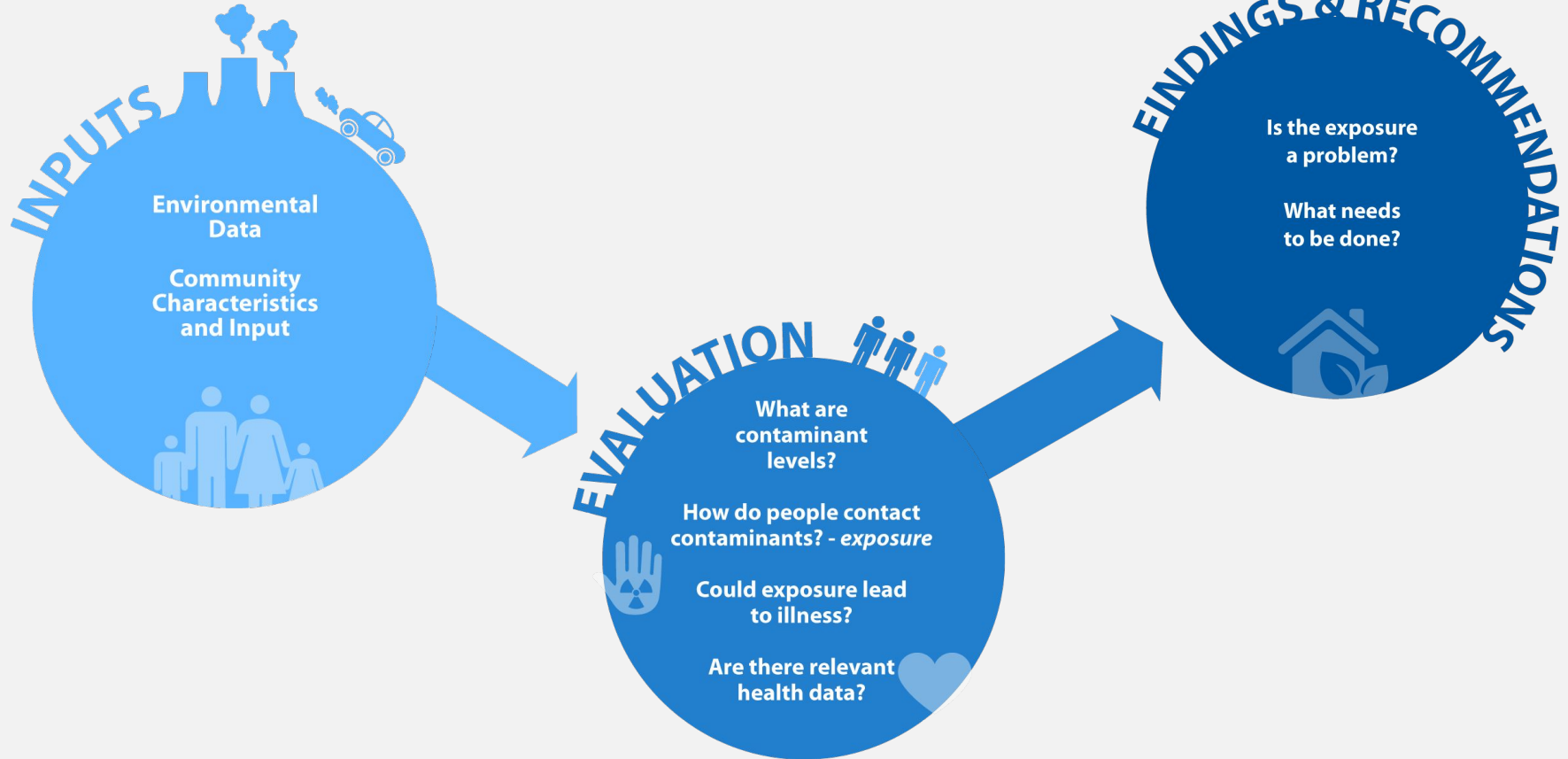
ATSDR Protects Communities

- Assess existing environmental and health data to determine whether people are at risk because of their exposures
- Make recommendations to EPA, state health and environmental agencies, and other stakeholders for stopping and preventing harmful exposures
- Identify data gaps that stop us from answering people's questions about their health risks
 - Collect more environmental data or biological data
 - Conduct an epidemiological study to determine the association between an exposure and a particular health outcome
 - Work closely with local residents in the community

Public Health Activities at Sites

- **ATSDR gets involved when**
 - A site is proposed to EPA's Superfund National Priority List (NPL)
 - Requested by a federal, state, or local agency
 - Petitioned by a Tribe or a community group
- **Activities may include technical assistance, health education, or documents such as public health assessment or exposure investigation.**
- **ATSDR evaluates petition requests by asking**
 - Has ATSDR addressed this question before?
 - Is there evidence of exposure to hazardous substances released from a contaminated site? Are there sufficient environmental data to use?
 - Would an ATSDR evaluation of the exposure pathway address the petitioner's concern?

Public Health Assessment Process



ATSDR's Health Assessment Process – Impacts

Support need for **cleanup** actions

Allow **early** response to public health issues



Identify potential **exposure** pathways to be characterized

Identify **new sites** or situations of health concern not under regulatory authority

Engage local and state health departments



Give **advice** to residents and community leaders



Provide physician **education** and community **outreach**

Questions?

Contact Information

Sue A Casteel <aov2@cdc.gov> 404-747-4185

Leann Bing - 404-747-4451

For more information, contact ATSDR
1-800-CDC-INFO (232-4636)
TTY: 1-888-232-6348 www.atsdr.cdc.gov
Follow us on Twitter @CDCEnvironment

The findings and conclusions in this report are those of the authors and do not necessarily represent the official position of the Centers for Disease Control and Prevention and the Agency for Toxic Substances and Disease Registry.

